

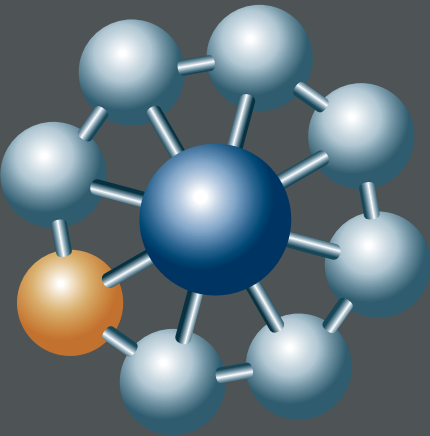
Cyber Bridge Software Package List

Software package	Unit	Functions
CP—BRG	CP—IO	EX system (Ethernet) communication
	CP—RO	EX system (RS-232C) communication
	CP—PS	Acquire and accumulate processing data
	CP—LG	Acquire and accumulate record data
	CP—AL	Acquire and accumulate alarm data
	CP—BK	Data backup
CP—RPT	CP—RP	Make reports
	CP—SR	Make simple reports
CP—PCI	CP—PC	Display charts
	CP—TR	Display trends
	CP—PD	Display simple diagrams
	CP—XL	Connect to Microsoft® Excel®
CP—ALM	CP—AM	Display analytic alarms
CP—BAT	CP—BT	Display and accumulate batch trends

● Microsoft® Excel® is a registered trademark of Microsoft Corporation in the United States and other countries.

Actual performance management and analysis system

CyberBridge



Comprehensive MES solution CyberPlant

CYBER
BRIDGE

CyberPlanner

HIBIS

Inventory Management System

CyberCall

Hand Work Management System

HiCompassage

CyberBridge

Traceability System

Equipment Operation System

CyberPrinter

Notice: For proper operation, follow the instruction manual when using the instrument.
Specifications in this catalog are subject to change with or without notice, as Hitachi High-Tech Solutions Corporation continues to develop the latest technologies and products for our customers.

Hitachi High-Tech Solutions Corporation

<http://www.hitachi-hightech.com/hsl/>
■Instruments & Control Systems Sales Div.
Harumi Triton Square Office Tower X, 1-8-10, Harumi, Chuo-ku, Tokyo, 104-6031 JAPAN
Tel: +81-3-6758-2092 Fax: +81-3-5859-5764
■Mito Manufacturing Div.
500,Miyu-ch0,Mito-shi,Ibaraki-ken 319-0316 Japan
Tel:+81-29-257-5100 Fax:+81-29-257-5120

For further information, please contact
your nearest sales representative.

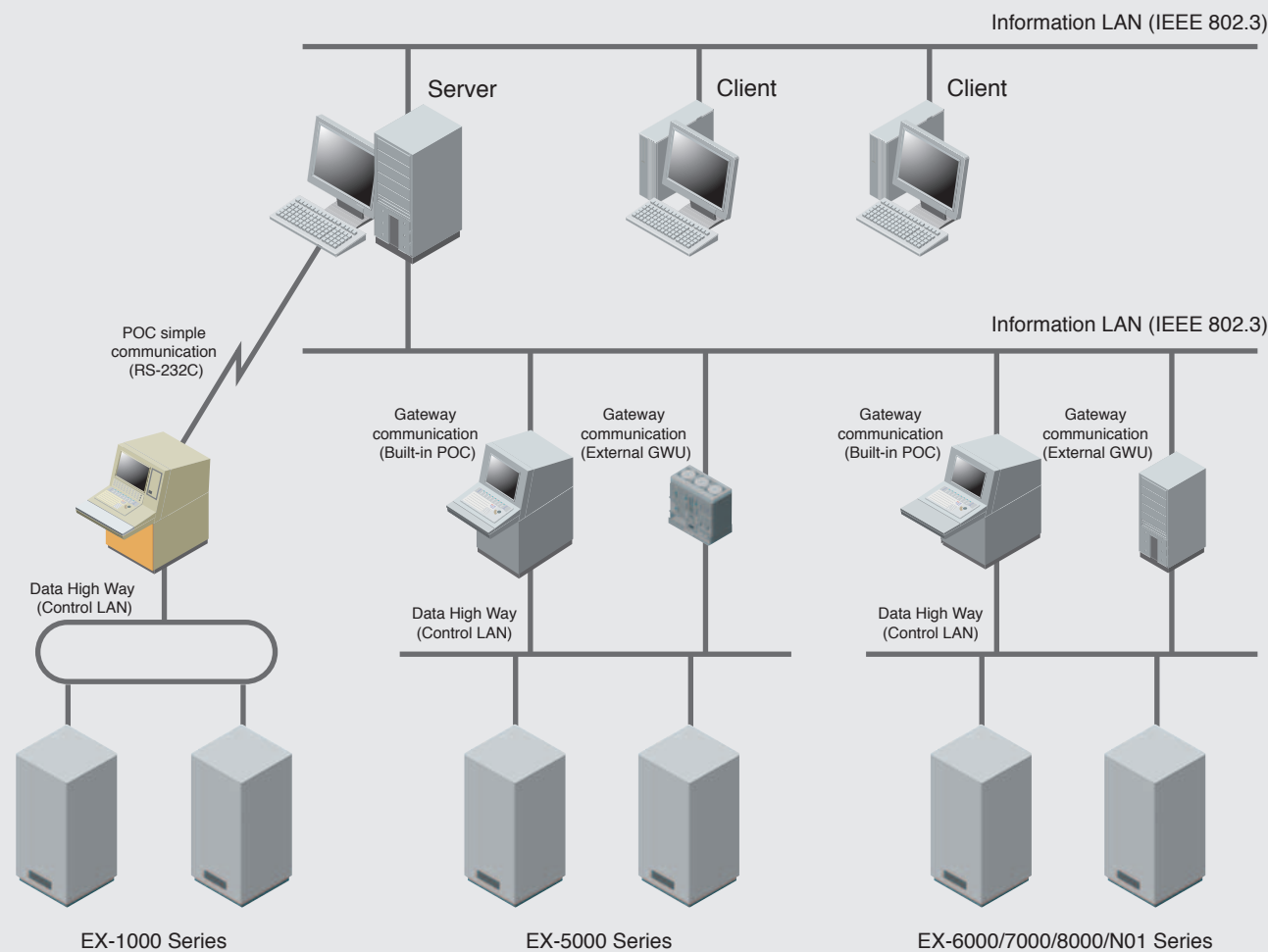
CyberBridge can analyze processing and alarm and report data accumulated and acquired via the control system thanks to its strong performance.

Application advantages of CyberBridge

- Make a database with processing and report data acquired and managed for three years.
- Acquire data at the rapidest period of one second and construct a large database with up to a maximum of 100,000 tags.
- It can also be connected to the control systems of other companies in addition to Hitachi DCS, which can be connected to a maximum of 16 systems simultaneously.
- Convert data acquired and accumulated from the database into a Microsoft® Excel® file.

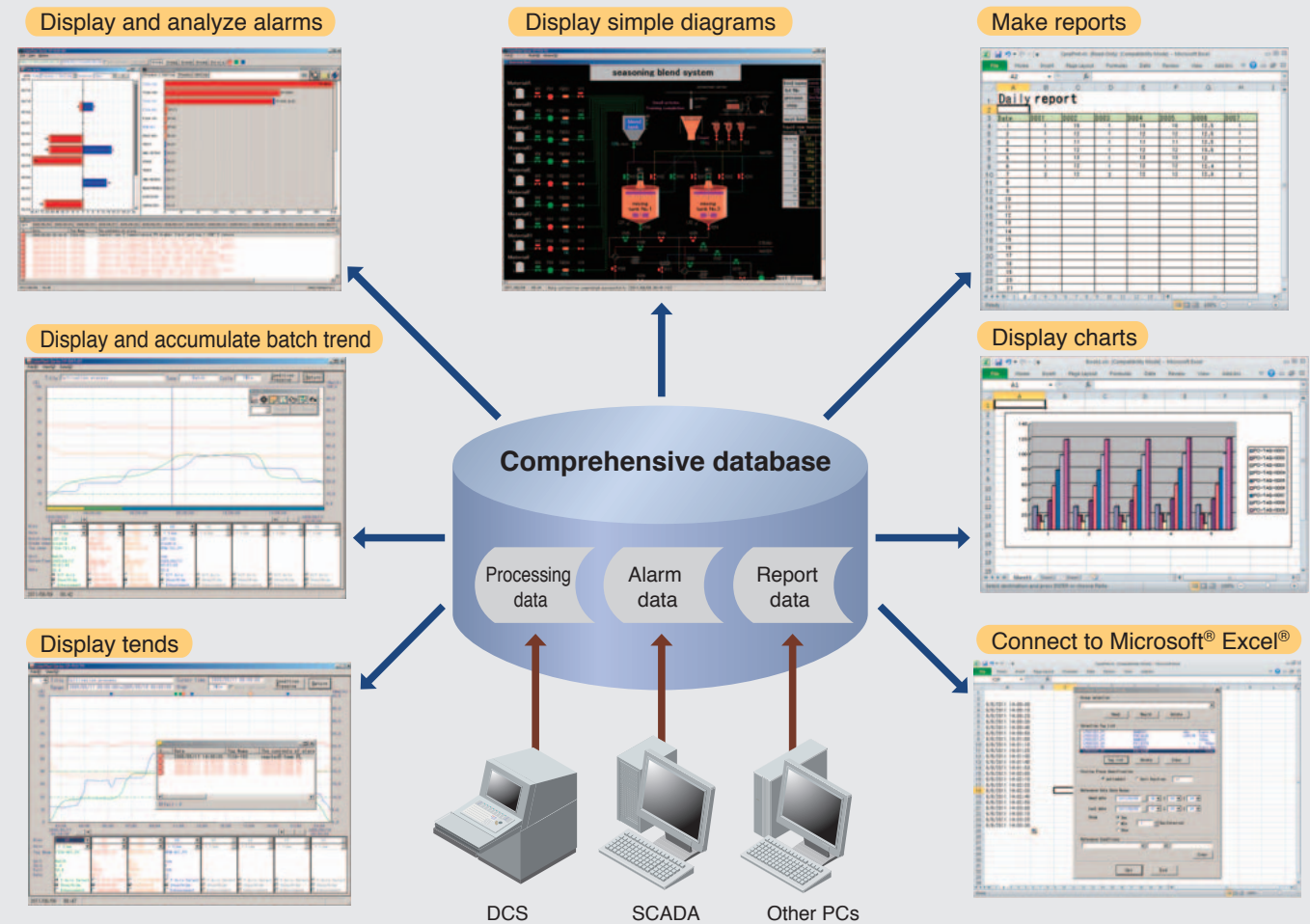
● Acquisition period, accumulation capacity and the number of tags are dependent on PC performance and IC capacity.

CyberBridge composition



● It can be connected to the control system of other companies via OPC.

CyberBridge functions



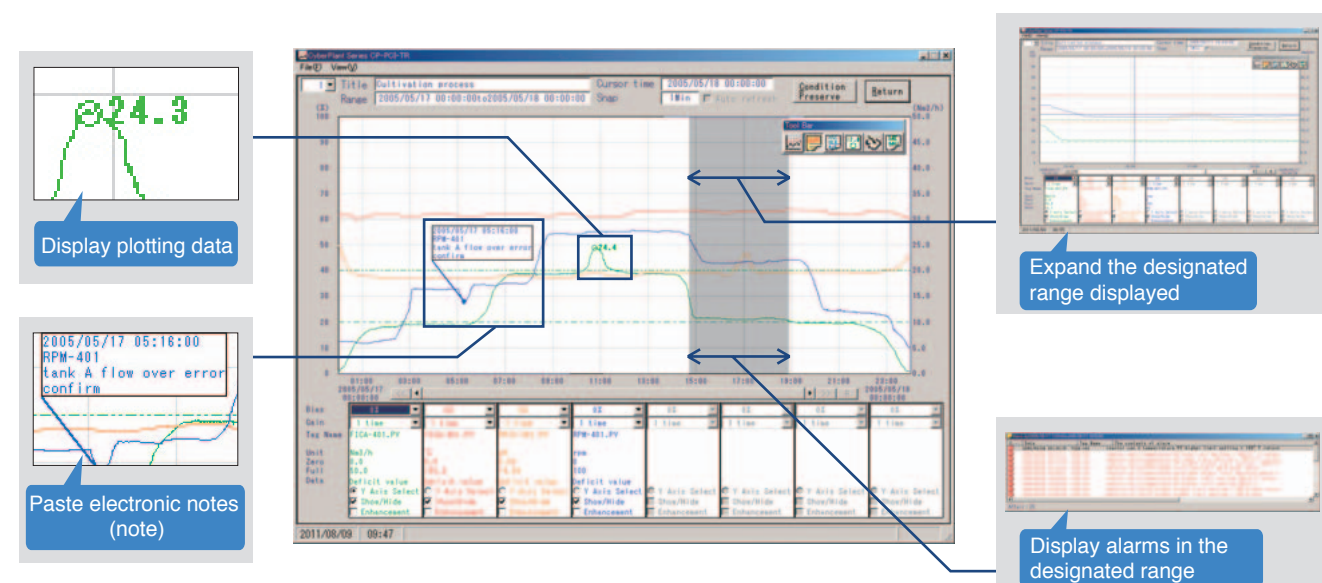
CyberBridge specifications

Functions	Specifications
Processing data acquisition and accumulation	Acquisition period: 1, 10, 30 seconds, 1 minute, 1 hour, and other periods
	Acquisition points: maximum of 20,000 points/GWU
	Accumulation time limit: Designate every set
Alarm data acquisition and accumulation	Alarm type: processing alarm, user alarm, operation guide and operation setting confirmation
	Acquisition period: 10 minutes, 30 minutes and 1 hour
	Accumulation number: maximum of 100,000 pieces
Display the trend	1,000 pages, 8 trend charts per page, connected to the alarm and Microsoft® Excel®
Display and accumulate batch trend	40 pages and 8 trend charts per page, batch/comparison trend
Display the analytical alarm	List search, frequency/time series chart, connect it to a Microsoft® Excel® form
Display simple diagram	200 pages, 100 points per page, data replacement period: 10 seconds to 1 hour
Make reports	Daily/monthly/yearly/batch report in 250 format
Display the chart	200 groups, 20 points per group, 5 charts per group
Connect to Microsoft® Excel®	Read tags, 100 points per group, 1,000 groups

● Its functions may be restricted according to hardware composition and points actually available. ● Alarm data acquired and accumulated can only support EX-6000/7000/8000/N01 series.

Display trends

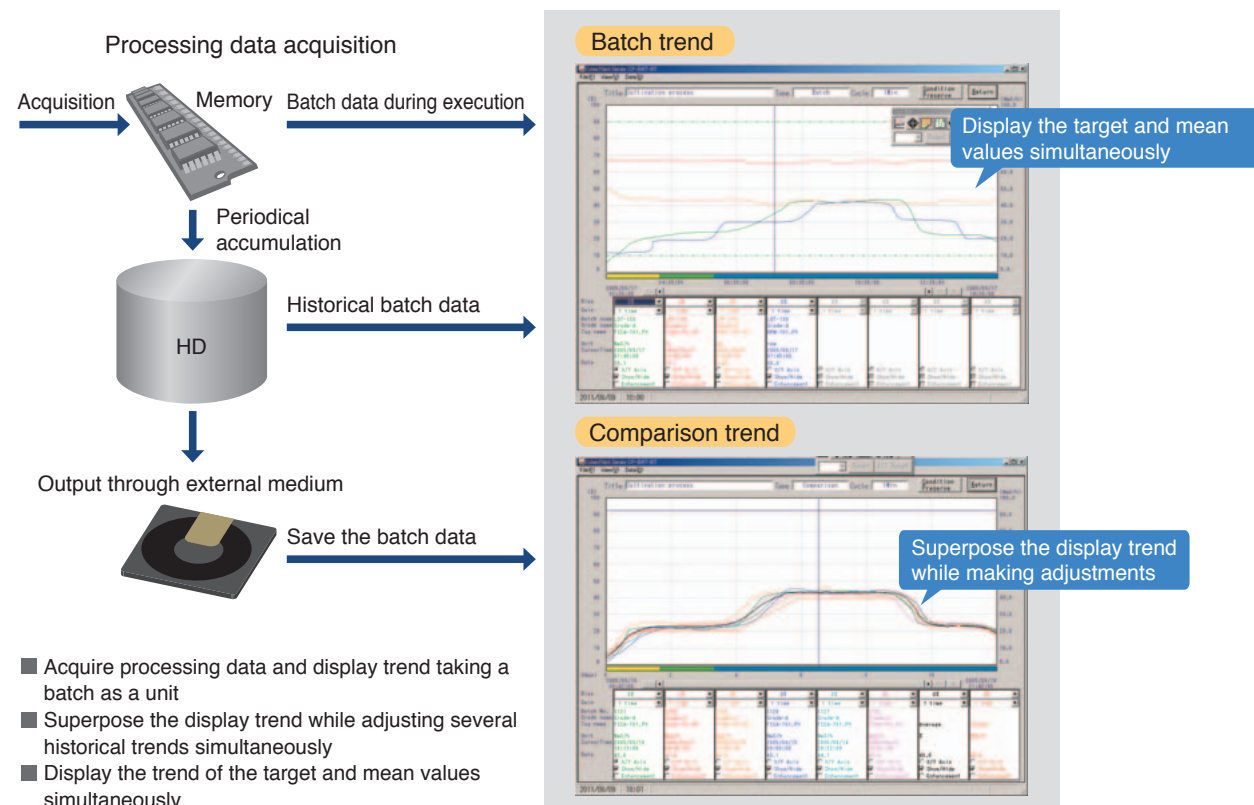
Display the trend of accumulated processing data



- Trends of advanced functions such as trend enlarging, data, amplification and displaying data at cursor positions
- Display up to a maximum of 28,000 plots, most applicable for long-term and detailed data analysis
- Display trend-related alarm data
- Image and trend data can easily be pasted into Microsoft® Excel®
- Electronic notes and values can be pasted on the trend diagram at will (plotting data)

Display and accumulate the batch trend

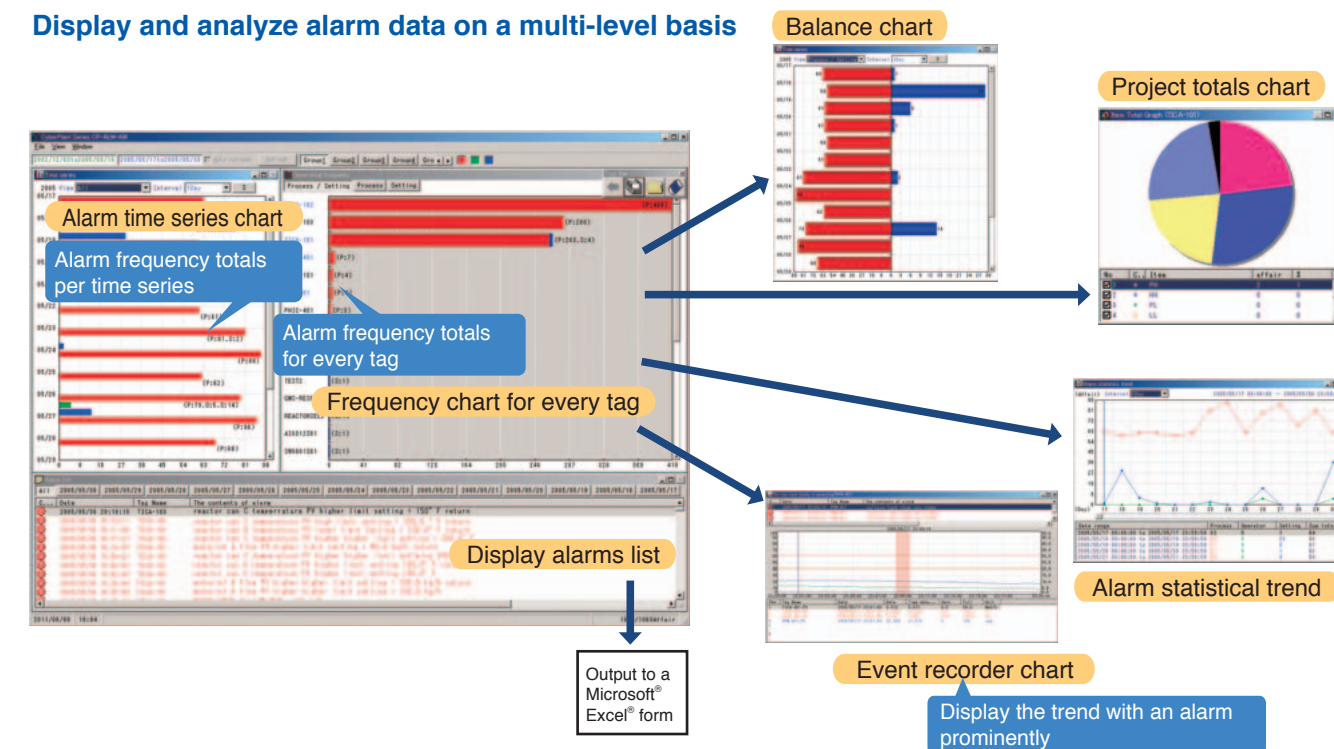
Applicable for batch plant trend display and analysis



- Acquire processing data and display trend taking a batch as a unit
- Superpose the display trend while adjusting several historical trends simultaneously
- Display the trend of the target and mean values simultaneously

Display and analyze alarms

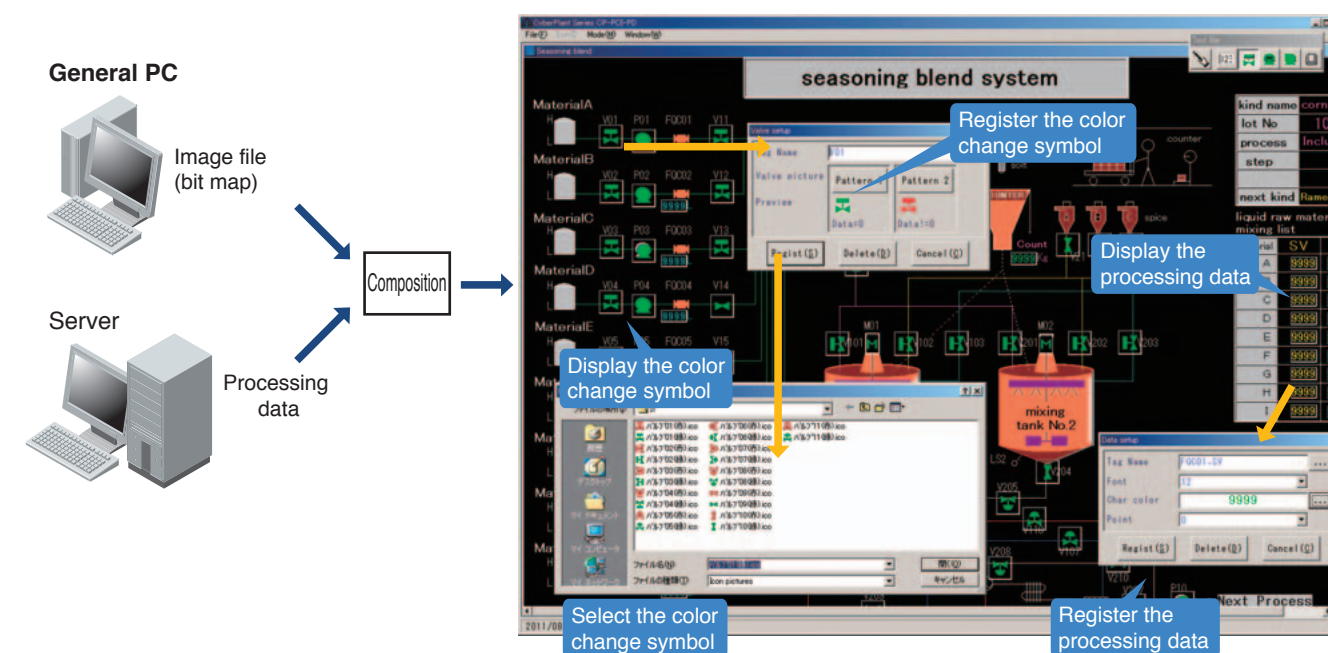
Display and analyze alarm data on a multi-level basis



- Display processing and operate guide and verify alarm information already set
- Display and analyze alarms on a multi-level basis in charts such as time series, balance chart and statistics
- Paste alarm data to Microsoft® Excel®

Display simple charts

Intuitively monitor processing with chart display



- Monitor the processing state at an office separated from the apparatus room
- Use software to construct a monitoring screen through created image files
- Paste the monitoring screen to Microsoft® Excel®

Make reports

Make simple reports and output daily and batch reports

Timed registration form

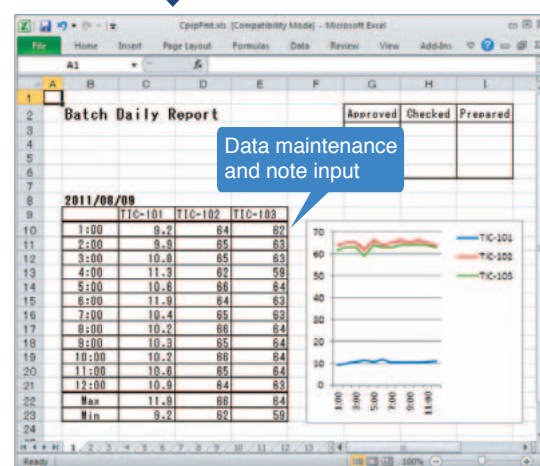
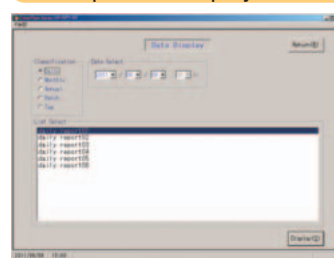
Format registration form

Data edition registration form

Use a Microsoft® Excel® to register tickets

Input and output documents

The report will display selected pictures

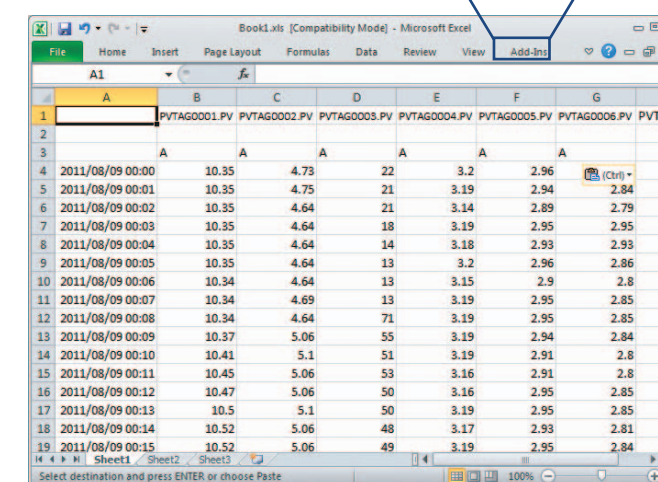


- Use Microsoft® Excel® to make simple reports
- Print and output files by deadline and event
- Input notes and maintenance data
- Paste ticket data to Microsoft® Excel®

Connect it to Microsoft® Excel®

Directly output processing data to Microsoft® Excel®

Open a data selection screen right from the Microsoft® Excel® menu



Data selection screen

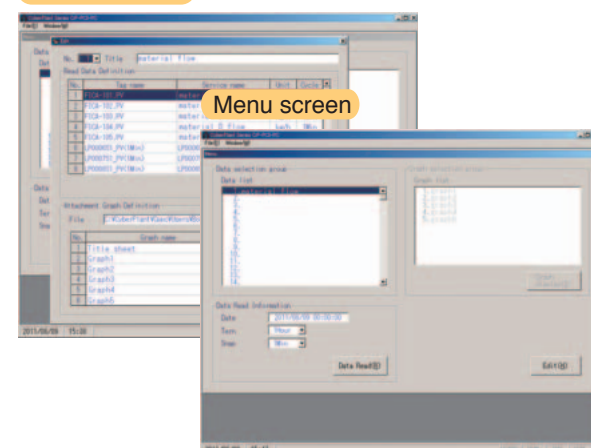
Processing data is passed

- Connected directly to the Microsoft® Excel® menu
- Data can easily be pasted into Microsoft® Excel®
- Rich search functions such as date range and snap

Display charts

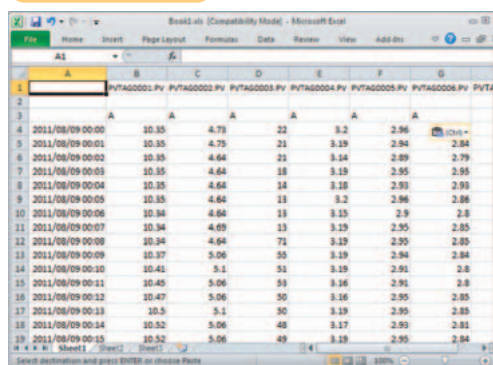
Read processing data and display it in charts

Edition screen

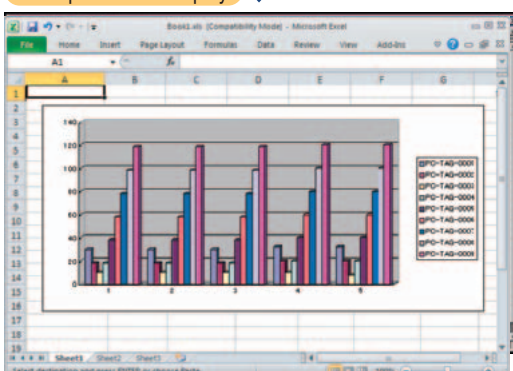


Designate the reading date and data

Time series data



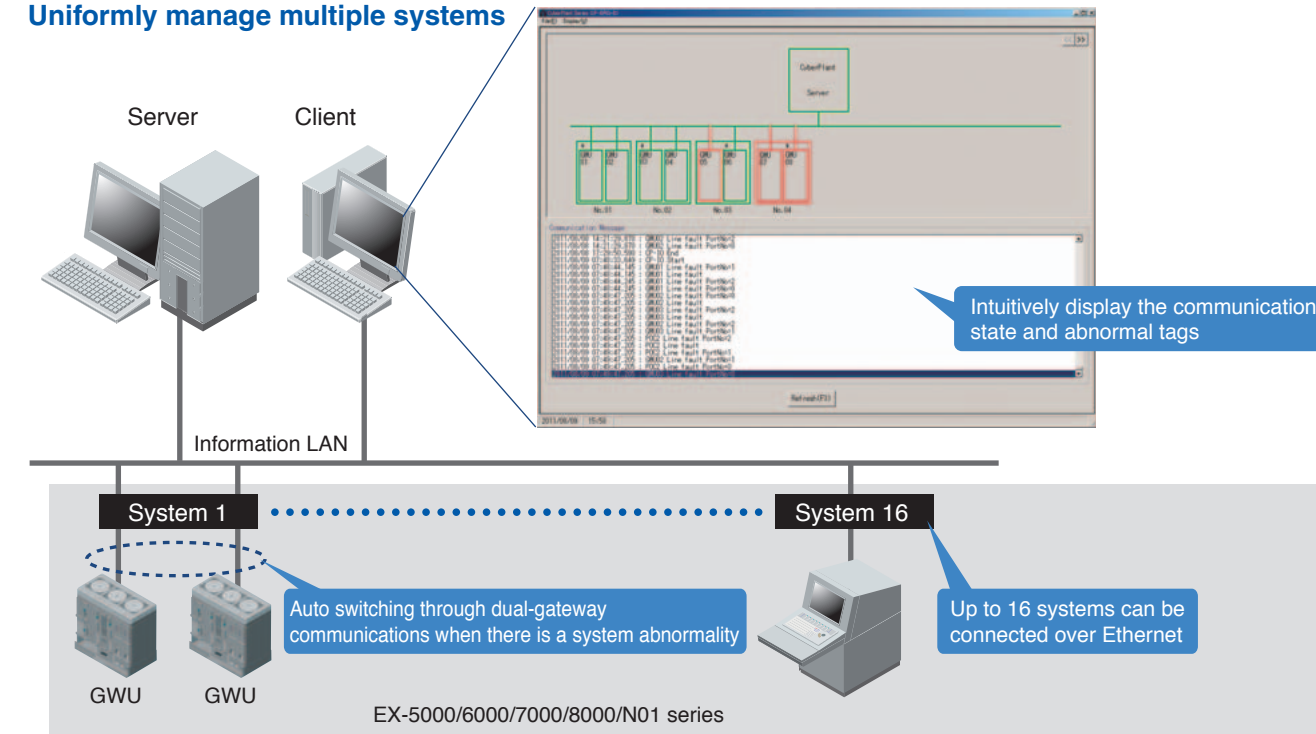
Example of chart display



- Draw time series data easily through date, period and snap
- Easily make and display Microsoft® Excel® compatible charts

Reliability

Uniformly manage multiple systems



- Connect to EX systems, both old and new*
- Construct large, comprehensive systems
- Achieve high reliability through dual-gateway communication

* It can be connected through EX-5000/6000/7000/8000/N01 series