

# Rapid Analysis of Chlorogenic Acid Using the Hitachi LaChromUltra® High Speed Liquid Chromatography System

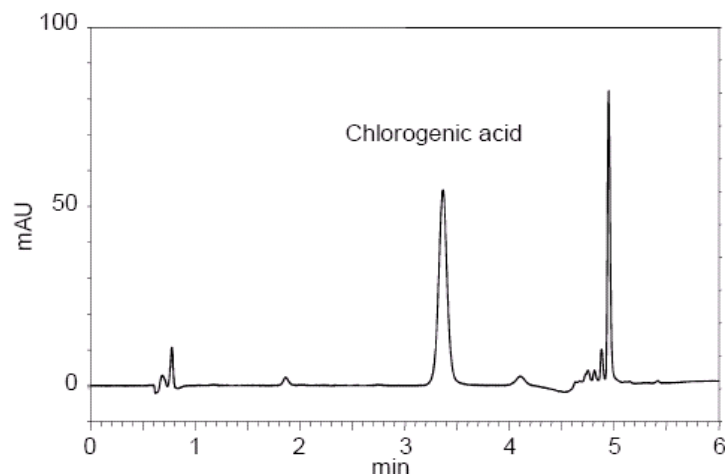
Hitachi High Technologies America, Inc.

**C**hlorogenic acid is a well-known polyphenol in coffee. It is also one of the active ingredients of the Chinese herbal medicine, *Flos Lonicerae Japonicae* (dried bud of the Japanese honeysuckle), which exhibits anti-inflammatory and antibacterial properties. Here we describe a methodology for the rapid analysis of chlorogenic acid using the highly flexible Hitachi LaChromUltra® U-HPLC system via reversed phase separation and ultraviolet detection. The data here specifically describes the analysis of a coffee drink in addition to the *Flos Lonicerae Japonicae* extract according to Chinese Pharmacopeia.<sup>1</sup>

## Experimental Conditions

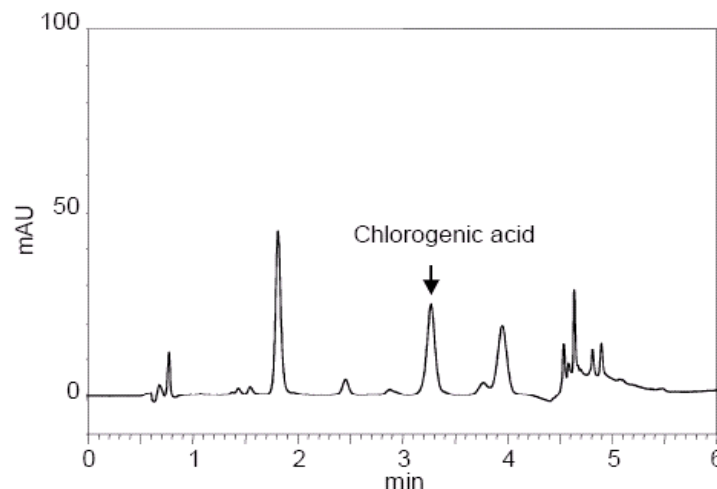
Module	Conditions
Pump (L-2160U)	Mobile Phase A: CH <sub>3</sub> CN Mobile Phase B: 10 mM KH <sub>2</sub> PO <sub>4</sub> (pH 3.0) Flow Rate: 0.30 mL/min
Autosampler (L-2200U)	Injection Volume: 1 µL
Oven (L-2300)	Temperature: 25 °C
Detector (L-2400U)	Wavelength: 327 nm
Column	Hitachi LaChromUltra C18; 2.0 µm; 2.0x75 mm

## Results – Chromatogram of Flos Lonicerae extract and sample preparation procedure

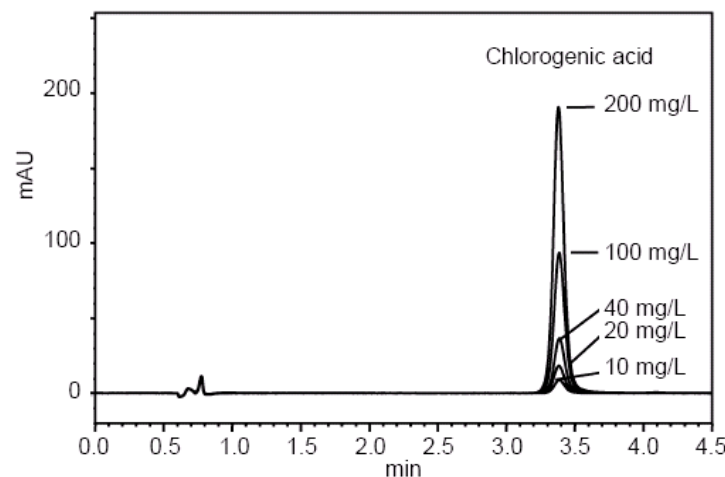


1. Add 50 mL of 50% methanol to 50 mg Flos Lonicerae, and weigh.
2. Sonicate for 30 minutes while shaking occasionally.
3. Weigh again. Add 50% methanol to compensate for decreased volume.
4. Mix well. Filter with 0.2 µm filter.
5. Extract 5 mL of filtrate. Dilute 50% methanol to a volume of 25 mL.

## Results – Chromatogram of coffee drink



## Results – Overlaid chromatograms of chlorogenic acid standards at varying concentrations



## Discussion

Hitachi's LaChromUltra® liquid chromatography system is extremely effective at rapid analysis of chlorogenic acid in a variety of samples. It is well separated from other components in the matrices for high resolution analysis over a broad concentration range.

### References:

1 – Technical Data 97, Hitachi High Technologies Corporation.

**Hitachi High Technologies America, Inc.**  
 Life Sciences Division  
 5100 Franklin Drive  
 Pleasanton, CA 94588  
 Toll Free: (800) 548-9001