

Empower 2™ Software for Hitachi Liquid Chromatography Systems



The perfect combination of
performance, value, and power

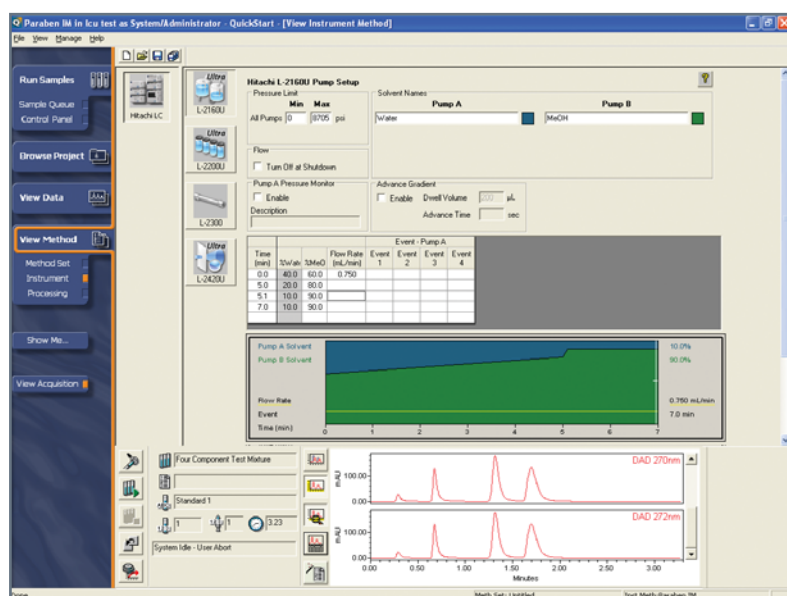
HITACHI
Inspire the Next

www.hitachi-hta.com/hplc

Hitachi and Waters—Working together to provide flexible, cost effective solutions for your lab

Hitachi has a distinguished 50-year history of providing the most-reliable, highest-performing liquid chromatography systems in the industry. Now through a collaboration between Hitachi High Technologies and Waters® you can enjoy both the powerful software capabilities of Empower™ 2 and the industry-leading performance and value of Hitachi's LaChromUltra™ and LaChrom Elite® liquid chromatography systems.

Achieving outstanding chromatography results has never been easier.



The View Instrument Method Window in Empower 2 Software's QuickStart user interface provides easy access to all instrument control parameters.

Whether you are new to Empower 2 or adding chromatography systems to your existing Empower 2 environment, Hitachi makes it easy to focus on running samples and producing meaningful results without experiencing downtime for training or re-engineering your work flow.

Hitachi instrument control is seamless in Empower 2 with an intuitive interface designed to maximize your productivity, improving how you collect, process, and print chromatography data—and results can be centrally stored in a database. Empower 2 includes capabilities such as customizable data reports, integrated custom calculations, advanced data management, and an intuitive online answer wizard to help increase the productivity of your lab.

Empower 2 User Interface Options

- **QuickStart** is based on a single-window interface. It highlights where the user is within the application at all times, presenting the appropriate functionality required when the user needs it. With QuickStart in Empower 2 you can easily develop new methods, customize reports, and manage your data from one centralized location.
- The **Pro** user interface is perfect for system administrators or anyone who needs total control and access to all software functions.
- **Open Access** lets the routine user select a method, enter the number of samples to run, and start analyzing in just a few quick steps.
- The **Web** user interface allows remote or mobile users to access information easily via the Internet or an intranet.

Usability

An interface for everyone in the lab regardless of tasks or skill levels.

It used to be that chromatography data software either couldn't meet all your lab's needs, or was so extensive that it was difficult to learn and use. In addition, many CDS solutions often required add-on applications to gain functionality such as security and data management.

Now, Empower 2 Software provides all the functionality your laboratory staff needs to work efficiently with chromatography data. Empower 2 is equipped with unique interface options designed for every user in your lab—regardless of tasks or skill levels.

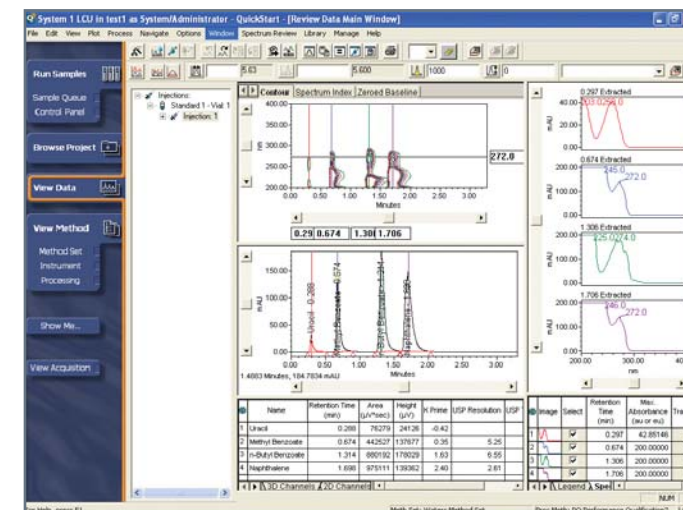
The result is a fully comprehensive and user-friendly solution that will improve your lab's efficiency.

Versatility

Now all you need is one software package to accomplish multiple tasks in your lab.

With Empower 2 software you can acquire and control data with different instrumentation including HPLC, U-HPLC, and GC, as well as different detection techniques including MS and photodiode array (DAD)—all from a wide range of vendors. This compliance-ready software solution enables labs to standardize on Empower 2, maximizing your productivity and prolonging your instrument investments.

Empower 2 also offers robust peak integration capabilities with ApexTrack™. Automated and reliable peak integration, with effective detection of low level peaks on noisy or sloping baselines, enables you to reduce method development times.



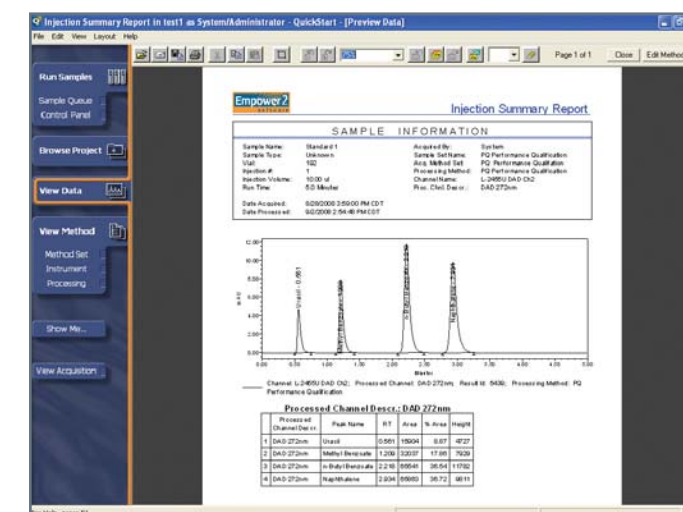
Easily view all aspects of your data including multiple spectra and contour views from the Hitachi L-2455 diode array detector in the View Data Main Window.

Compliance

Be confident your data meets all compliance regulations.

Managing regulatory compliance and security is one of the biggest challenges for today's labs. Empower 2 provides a simple yet comprehensive interface for system management. Step-by-step guidelines are provided to ensure that the administrator can configure your Hitachi LC system to comply with GxP and 21 CFR Part 11 regulations.

Multi-level security is provided for almost every job—from assigning access privileges, to automated log-outs due to inactivity, to establishing audit trails and regulating new projects. Empower 2 ensures the utmost integrity for all your raw data and test results. Empower 2 also helps you manage your compliance on a day-to-day basis with such capabilities as secure time-stamped audit trails. Records can easily be reviewed so you can apply the appropriate electronic signatures.



The powerful reporting and compliance capabilities of Empower 2 allow you to view reports, apply electronic signatures, and save the information to a database for later reference.

Scalability

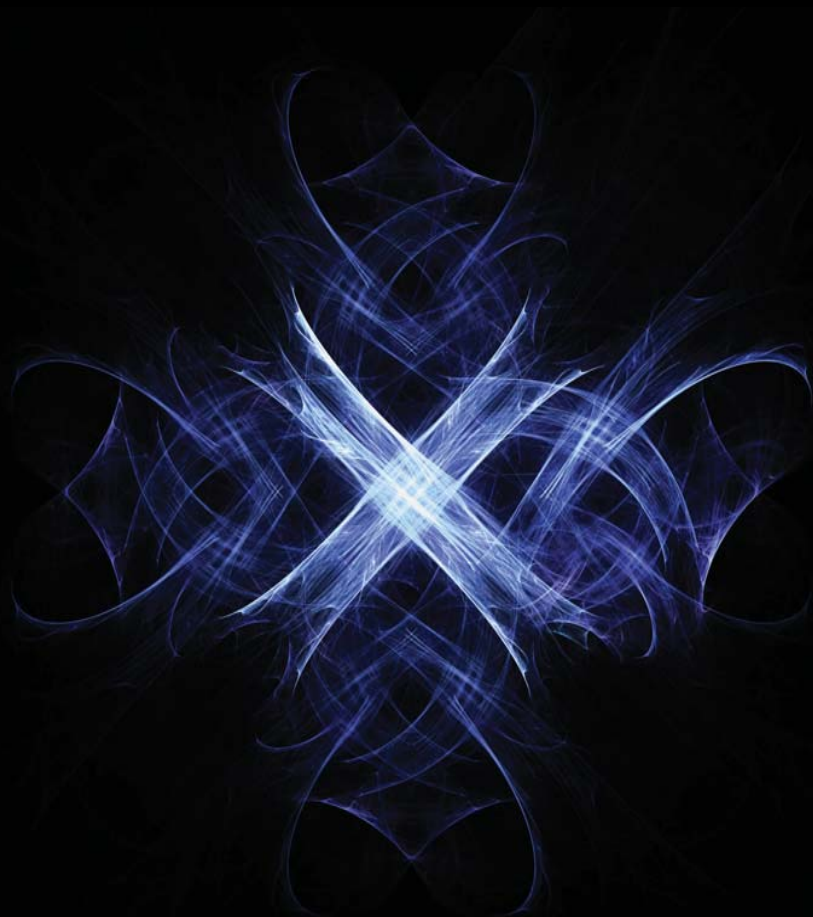
A software solution that grows with your lab.

Both flexible and scalable, Empower 2 software makes the most of your lab performance without compromising data integrity. Empower 2 allows you to configure an appropriate solution for your lab.



HITACHI SERVICE AND SUPPORT

Hitachi High Technologies America has a nationwide service organization providing installation and technical support. Committed to our customers' satisfaction, Hitachi provides a wide range of service coverage options, including the new Complete Care plan. Call customer service or visit our web site for more information.



HITACHI
Inspire the Next

HITACHI HIGH TECHNOLOGIES AMERICA, INC.
LIFE SCIENCES DIVISION

5100 Franklin Drive
Pleasanton, CA 94588

(P) 800.548.9001 (US toll free)
(P) 925.218.2800
(F) 925.218.2900

web: www.hitachi-hta.com/hplc
E-mail: sales-LS@hitachi-hta.com